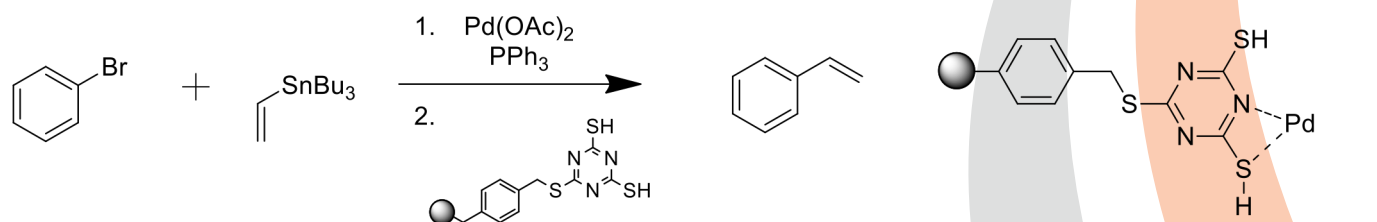


# Trimercaptotriazine (TMT)

Trimercaptotriazine Resin, MP, is a macroporous polystyrene resin functionalized with a trimercaptotriazine end group while its Silica counterpart is bound to a silica backbone. This reagent has shown to be an exceptional scavenger of organometallic reagents. MP-TMT is also extremely efficient in its ability to scavenge Copper.

The limitations of solution phase trimercaptotriazine are based primarily around solubility in various solvents. The macroporous backbone of MP-TMT allows for its use in all solvents, and the Silica counterpart is effective in all solvents except any protic media. Simple filtration removes it (and the complexed metal) from your reaction.

## General Reaction



## References

- Rosso, V.W. *Org. Process Res & Dev.* **1997**, *1*, 311-314  
Ishihara, K. *Chem Lett*, **2000**, *29*, 1218-1219  
Chen, C.; Dagneau, P. *J. Org. Chem.* **2003**, *68*, 2633-2668.

## Ordering Information

### MP-Trimercaptotriazine

|   |      |             |
|---|------|-------------|
| Loading: 3.0-3.4 mmol/g                               | 10g  | SPMP 26-10  |
|   | 25g  | SPMP 26-25  |
| Bead size: 330-1225 microns, 15-50 mesh (>90% within) | 100g | SPMP 26-100 |
|   | 1Kg  | SPMP 26-1kg |

### Trimercaptotriazine-Fine

|                         |      |             |
|-------------------------|------|-------------|
| Loading: 1.7-1.8 mmol/g | 10g  | SPMP 27-10  |
|                         | 25g  | SPMP 27-25  |
| Bead size: 100-200 mesh | 100g | SPMP 27-100 |
|                         | 1Kg  | SPMP 27-1kg |

### Si-Trimercaptotriazine

|                               |      |             |
|-------------------------------|------|-------------|
| Loading: 0.3-0.35 mmol/g      | 10g  | SPSi 22-10  |
|                               | 25g  | SPSi 22-25  |
| Bead size: Avg. 40-62 microns | 100g | SPSi 22-100 |
|                               | 1Kg  | SPSi 22-1kg |

## Solvent Compatibility

|     |      |         |     |
|-----|------|---------|-----|
| MP: | THF  | Silica: | THF |
|     | DMF  |         | DMF |
|     | NMP  |         | NMP |
|     | DCM  |         | DCM |
|     | DCE  |         | DCE |
|     | MeOH |         | ACN |
|     | EtOH |         |     |